

DIVISION OF WATER

300 Sower Boulevard, Frankfort, KY 40601
Phone: 502.564.3410

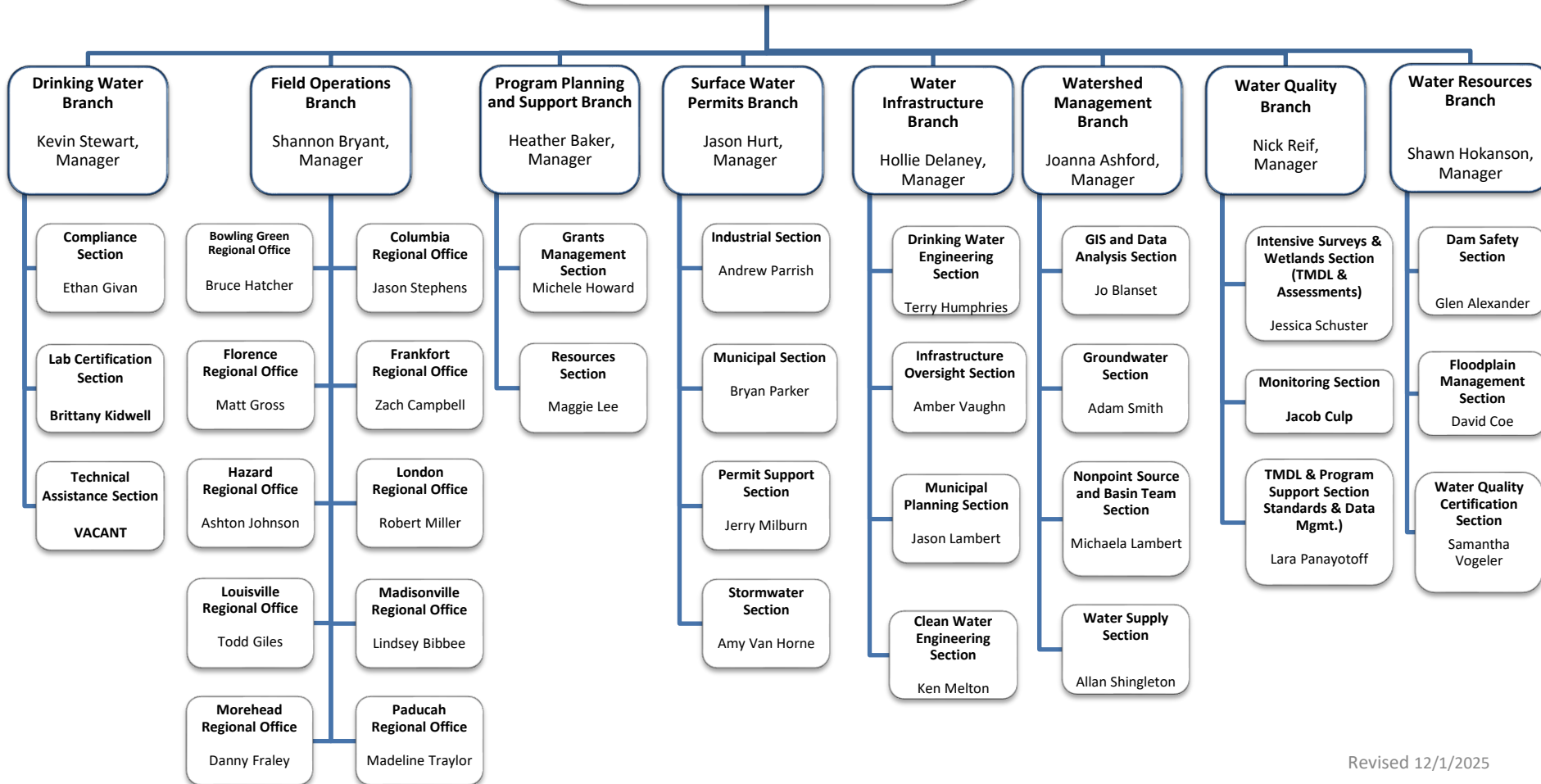
Sarah Marshall, Director

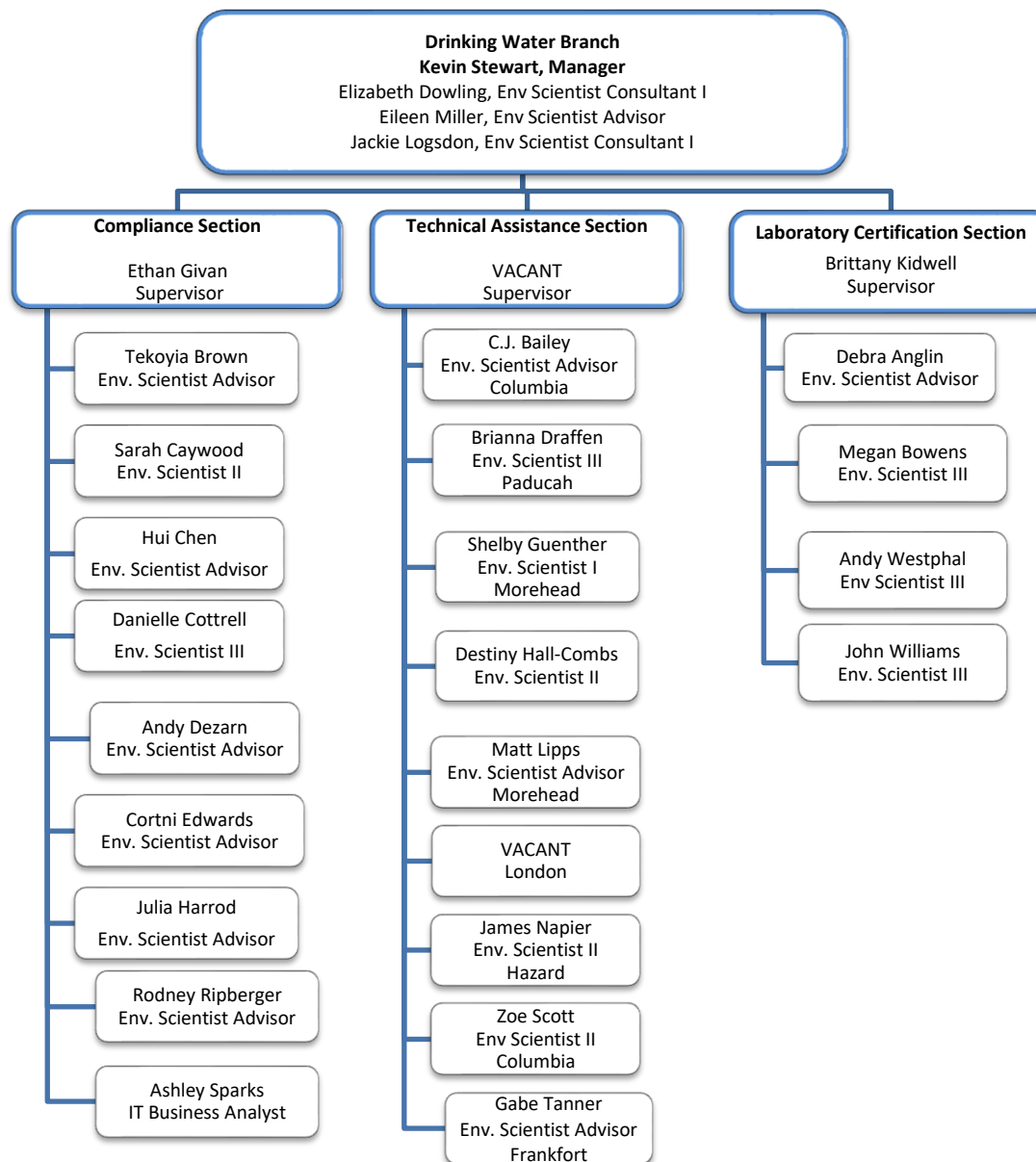
John Webb, Assistant Director II

Jory Becker, Env Engineer Consultant

John Carlton, Admin Spec Senior

Josiah Frey, Env Sci Consultant II





Field Operations Branch
Shannon Bryant, Manager
Bill Baker, Env Scientist Consultant
Brian Crump, Env Scientist Consultant
Sarah Gaddis, Env. Scientist Consultant I
Stefanie Osterman, Env Scientist Advisor
Lorrie Rhodes, Program Coordinator
Andrew Wooldridge, Env. Scientist II

**Bowling Green
Field Office**

Bruce Hatcher
Supervisor

Ethan Morgan
Env. Scientist Advisor

Thomas Nicotera
Env. Scientist III

Justin Spears
Env. Scientist III

**Columbia
Field Office**

Jason Stephens
Supervisor

Justin Atkinson
Env. Scientist I

Dwayne Barnes
Env. Scientist Advisor

Jamie Powell
Program Coordinator

Levi Ramage
Env. Scientist I

**Florence
Field Office**

Matt Gross
Supervisor

Abigail Harris
Env. Scientist Advisor

Jeffrey Malsi
Env. Scientist Advisor

Adam Smith
Env. Scientist Advisor

Anna Young
Env. Scientist III

**Frankfort
Field Office**

Zach Campbell
Supervisor

John Hanks
Env. Scientist Advisor

Jarod Jones
Env. Scientist III

Deborah Singleton
Env. Scientist Advisor

**Hazard
Field Office**

Ashton Johnson
Supervisor

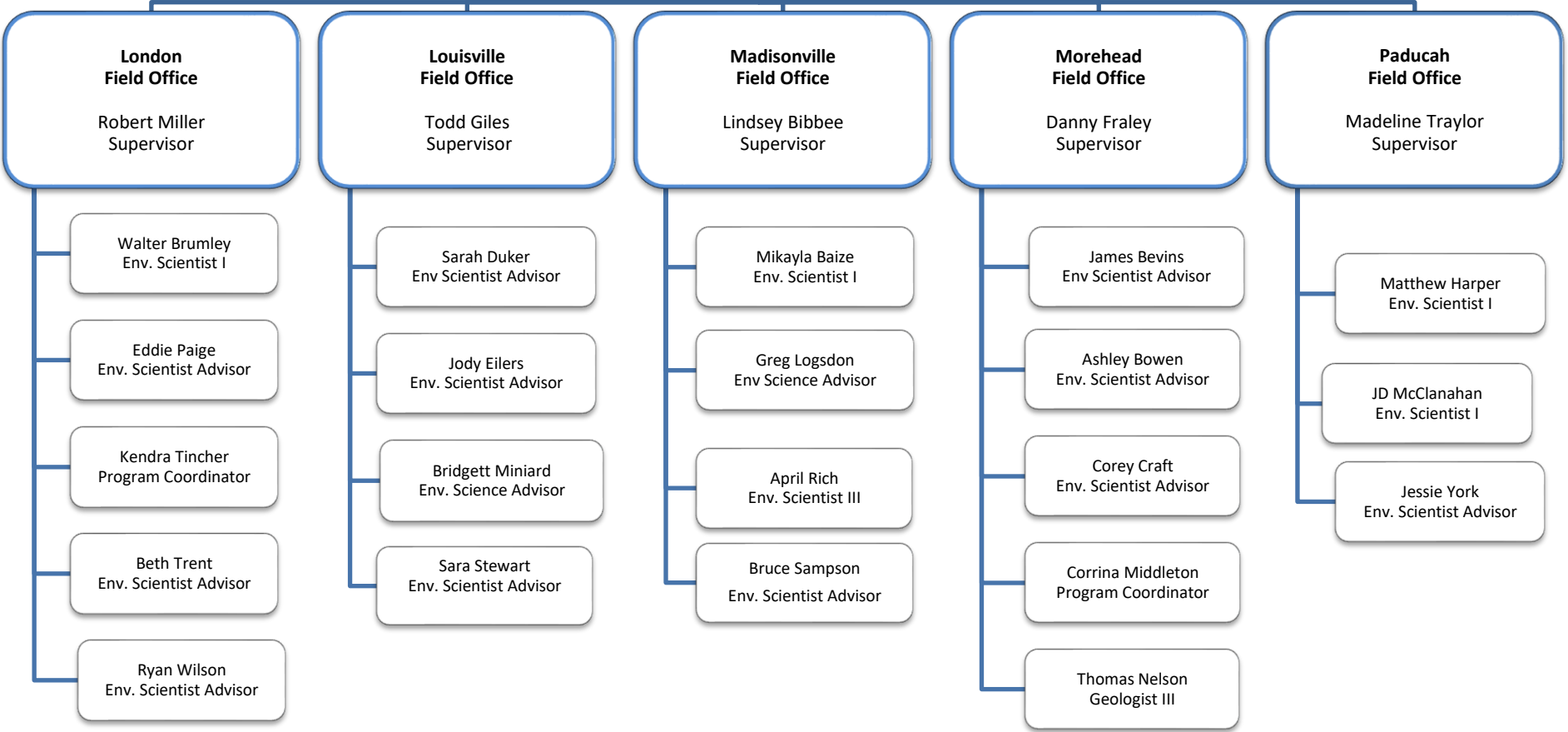
Jerry Back
Env. Scientist Advisor

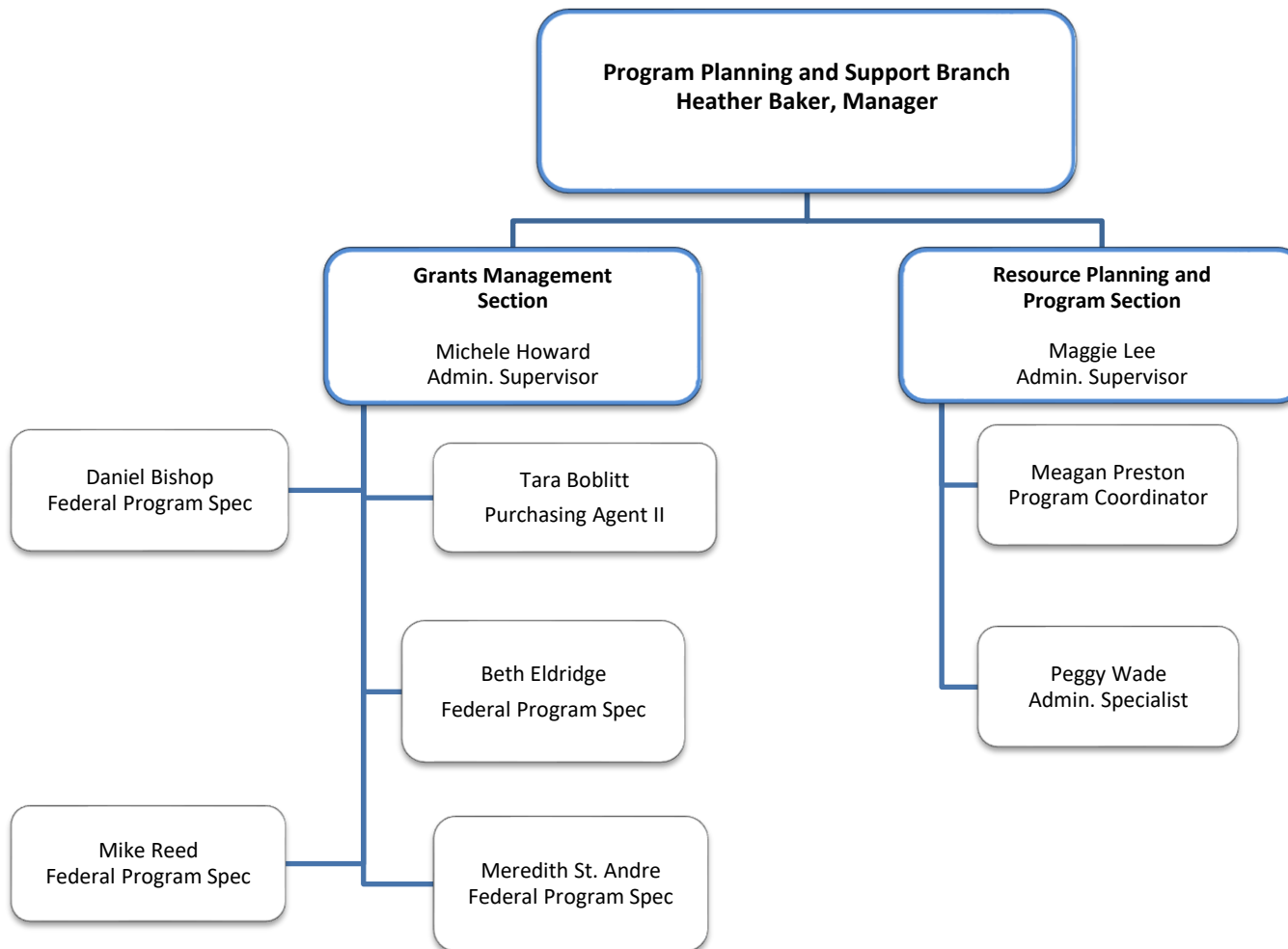
Robert Back
Env. Scientist Advisor

Michael Carwell
Env. Scientist I

Joshua George
Env. Scientist Advisor

Wade Maggard
Env. Scientist Advisor





Surface Water Permits Branch
Jason Hurt, Manager

Barry Elmore, Env. Engineer Consultant
Greg Goode, Env. Engineer Consultant
Robin Snider, IT Business Analyst

Industrial Section

Andrew Parrish
Supervisor

Tyler Cook
Env. Scientist Advisor

Sanjay Dulabh
Env. Engineer Tech II

Brenda Pecheco
Env. Engineer Technologist II

Abbas Pourghasemi
Env. Engineer Technologist II

Ronnie Thompson
Env. Scientist Advisor

Permit Support Section

Jerry Milburn
Supervisor

Crystal Dennis
IT Business Analyst

Madison Garrett
IT Business Analyst

Mel Grissom
Program Coordinator

Joy Haden
IT Business Analyst

Reedus Lee
IT Business Analyst Senior

Stormwater Section

Amy Van Horne
Supervisor

JP Beard
Env. Scientist III

Rebecca Graves
Env. Scientist Advisor

Ethan Lewis
Env Scientist I

Paul Tangel
Env. Engineer Technologist II

Shannon Urbanik
Env. Engineer I

Emily Jayne
Env Scientist Advisor

Municipal Section

Bryan Parker
Supervisor

Nicholas Bradford
Env. Engineer Tech I

Paul Bridges
Env. Engineer II

Sam Burns
Env. Engineer Technologist. II

Erich Cleaver
Env. Scientist Advisor

Lucas Hanks
Env. Scientist Advisor

Abby Rains
Env. Scientist Advisor

Mays Zaidan
Env. Eng. Technologist I

Water Infrastructure Branch
Hollie Delaney, Manager
Lori Dials, Env. Scientist Consultant I
Lissa Doss, Program Coordinator

Drinking Water Engineering Section

Terry Humphries
Supervisor

Cassie Campbell
Env. Engineer II

Stephen Kietz
Env. Engineer Tech II

Serena Male
Env. Engineer Tech I

Brett Thompson
Env. Eng Technologist II

Municipal Planning Section

Jason Lambert
Supervisor

John Berlejung
Env. Scientist II

Angela Billings
Env Scientist Advisor

Casey Greer
Env Scientist II

Lyndsi Hersch
Env Scientist Advisor

Ryan Reed
Env. Scientist Advisor

Nia Rivers
Env. Scientist Advisor

Matthew White
Env. Scientist II

Infrastructure Oversight Section

Amber Vaughn
Supervisor

Luke Morgan
Grants Administrator

Mercy Osuala
Grants Administrator

Clean Water Engineering Section

Ken Melton
Supervisor

Tony Butera
Env. Engineer Tech I

Daniel Kulik
Env. Engineer II

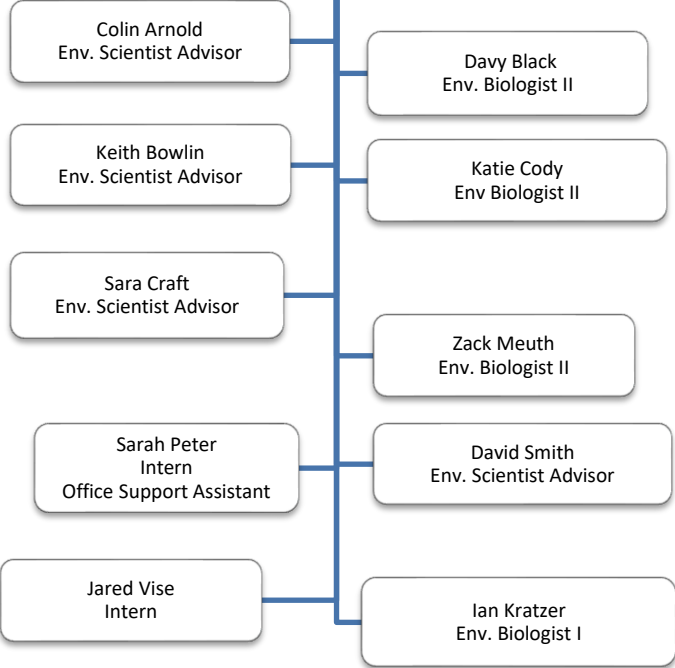
Amanda Mikuski
Env. Engineer II

Mark Rasche
Env. Engineer II

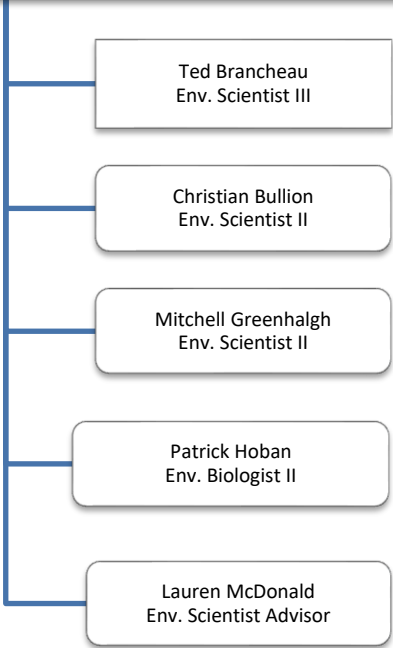
Water Quality Branch
Nick Reif, Branch Manager

Andrea Fredenburg, Env. Scientist Consultant I
Katie McKone, Env. Scientist Consultant I

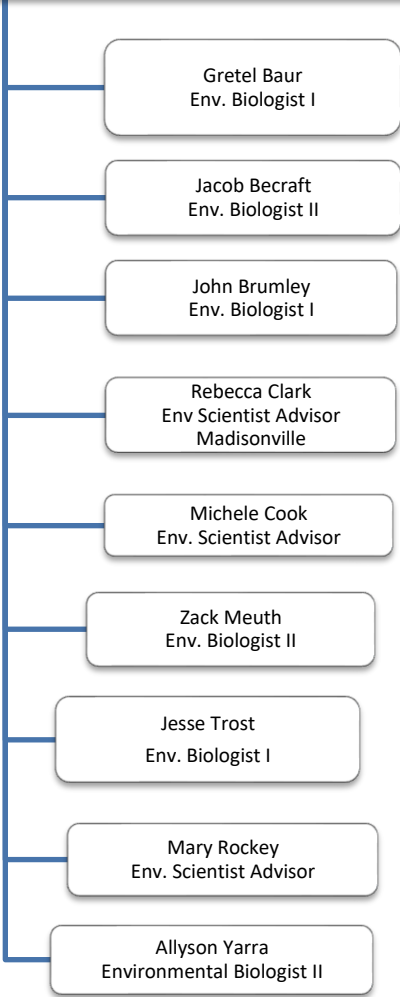
Monitoring Section
Jacob Culp
Supervisor



**TMDL and Program Support Section
(Standards and Data Management Section)**
Lara Panayotoff
Supervisor



**Intensive Surveys & Wetlands
(TMDL & Assessments Section)**
Jessica Schuster
Supervisor



Water Resources Branch
Shawn Hokanson, Manager

Kaycie Len Carter, Env Scientist Consultant
Alex VanPelt, Env Scientist Advisor

Dam Safety Section

Glen Alexander
Supervisor

Beth Harrod
Env Engineer II

Joselin Rodriguez
Env Engineer Technologist I

Marilyn Thomas
Env Engineer II

Gary Wells
Env. Engineer II

Floodplain Management Section

David Coe
Supervisor

Kathy Allen
Env Scientist III

Marouf Bar
Env. Engineer Tech II

Soheyl Bigdeli
Env Engineer Technologist I

Kate Carigan
Env Scientist III

Solitha Dharman
Env Engineer II

Sam McElhannon
Env Engineer Tech I

Water Quality Certification Section

Samantha Vogeler
Supervisor

Andrea Dustin
Environmental Biologist II

Kristine Gauthier
Env Scientist II

Michael Heyn
Env Scientist Advisor

Bryan Killian
Env Scientist III

Ben Lindsay
Env. Biologist II

Watershed Management Branch
Joanna Ashford, Manager
Paulette Akers, Env. Scientist
Bill Caldwell, Env. Scientist Consultant I
Jo Blanset, Env. Scientist Consultant I
Caroline Chan, Env. Scientist Consultant I
Ben Currens, Env. Scientist Consultant I
Wes Turner, Env. Scientist Advisor
Jill Wilhelm, Admin. Specialist Senior

Groundwater Section

Adam Smith
Supervisor

Tim Collins
Env. Scientist IV

Bronson McQueen
Geologist III

Megan Sideway
Env. Scientist II

Kurtis Spears
Env. Scientist Advisor

**Nonpoint Source & Basin Team
Section**

Michaela Lambert
Supervisor

Haileigh Arnold
Env. Scientist II

Colin Duncan
Env. Scientist II

Amber Hawkins
Env. Scientist Advisor

Alice Mandt
Env. Scientist Advisor

Jo Ann Palmer
Program Coordinator

Amy Rhorer
Env. Scientist I

Brian Storz
Env. Scientist Advisor

Water Supply Section

Alan Shingleton
Supervisor

Dale Booth
Env. Scientist Advisor

Rita Hockensmith
Systems Administrator

Ryan Parks
Geologist II

Chip Zimmer
Env. Scientist Advisor